

DOWNTRON DFF SERIES

Dust Collector/Downdraft Tables



What Industry Needs in a Downdraft Table

A Size That Fits the Application

From single-station to multi-operation, every Downtron is sized to fit the need, whether meeting stringent space requirements or accommodating multiple workers and/or large pieces.

Rugged Construction Combined With Quiet, Energy-Efficient Operation

The DFF Series is built of heavy-sheet steel and rolled structural shapes in an all-welded cabinet. Direct drive, backward-inclined airfoil type blowers have coned inlets and sound-insulated housing. With a standard rating of 78DB or lower, the Downtron may also be equipped with an optional blower exhaust stack silencer.

Ultra-Efficiency Nanofiber Cartridge Filters with Automatic Cleaning

Rated at MERV 15 efficiency, the Pulsatron's cartridge filters operate at a 40-60% lower pressure drop than traditional cartridge medias, resulting in lower energy consumption and a longer filter life. The media is tightly meshed of ultra-fine fibers 300 to 500 nanometers in diameter, effectively screening out sub-micron particles and assuring easy release of the dust cake during the cleaning cycle. The power-pulse cleaning system uses a solid-state programmable logic controller (PLC) to automatically sequence the pulse valves during the off-line cleaning cycle.

Why a Self-Contained Downdraft Table?

Broad Spectrum Collection

Works with gravity to collect a wide range of dust particles.

Worker Ease

Freedom of movement for the operator, as compared to arms or vacuum attachments.

Accessibility

Provides a work cell wherever needed in the shop.

Various Size Tasks

One or more operators, working on small or large pieces.

Space Economy

Compact dust collector / work table configuration.

Energy Savings

Re-circulation of filtered air.

Industrial Downdraft Tables



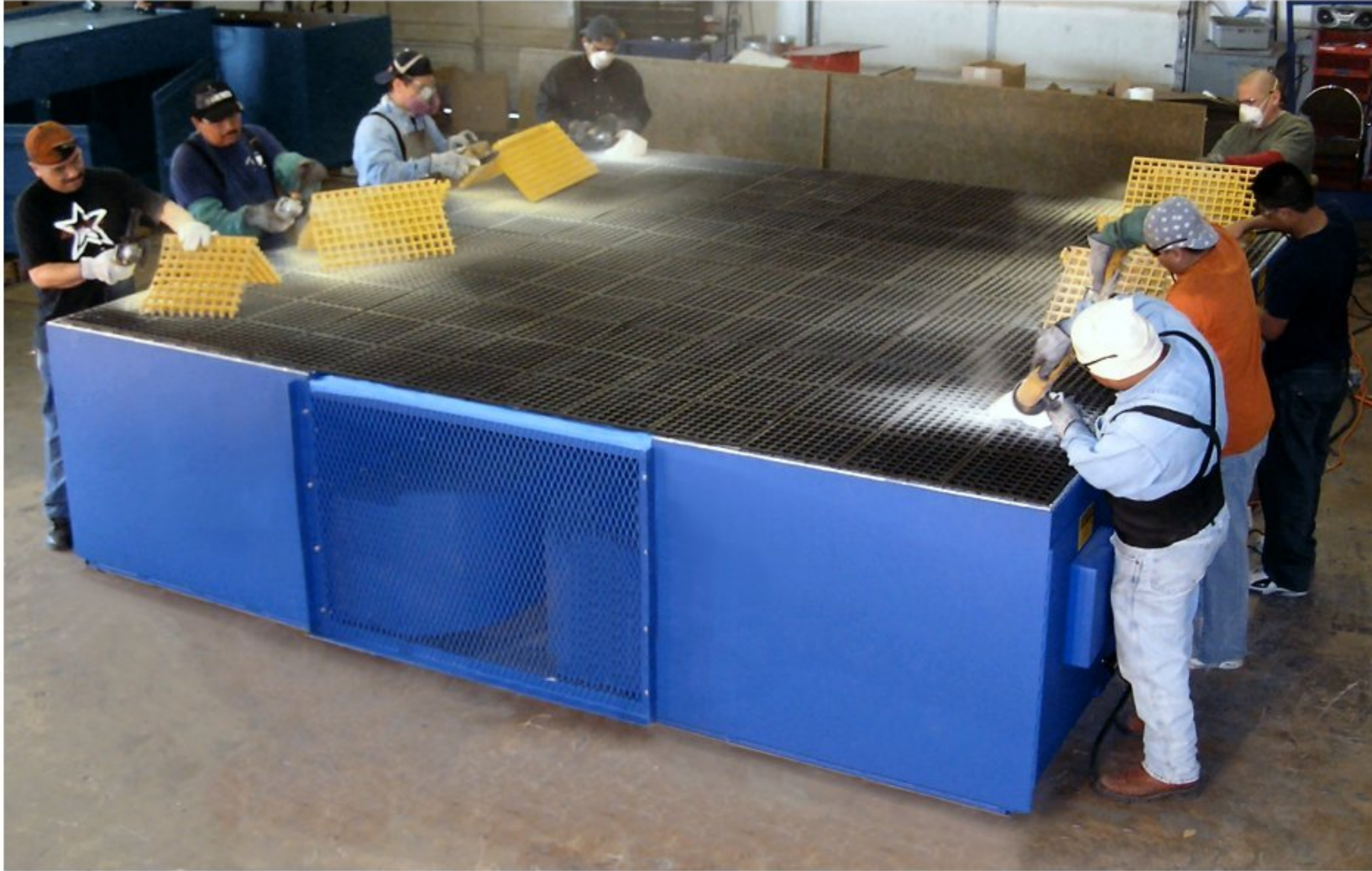
FILTER 1

1-800-289-0189

CUSTOM SPECIALISTS FOR INDUSTRIAL NEEDS

DOWNTRON DFF SERIES

Downdraft Table With Integral Cartridge Dust Collector



High-Efficiency Dust Collection Table Sized to Fit the Need

Features

- Ultra-efficient Nanofiber Cartridge Media
- Three Phase TEFC Motors on Rubber Vibration Mounts
- Direct Drive, Backward Inclined Airfoil Type Blower with Coned Inlet for Maximum Efficiency
- Sound Rating of Maximum 78 DB
- All Welded 12/14 Ga. Steel
- No Bearings to Grease or Belts to Change
- Pull-Out Dust Drawers
- Automatic Power-Pulse Filter Cleaning System Utilizing Solid State PLC
- Grated Downdraft Work Surface
- Industrial Blue Enamel

Options

- Carbon After Filters
- Odor Absorption Modules
- Sound Attenuators
- Safety After Filters--Ashrae or HEPA
- Work Surface Grating: Metal, Galvanized, Stainless Steel, Non-Scratch Fiberglass, Rubber, Wood; Various Hole Size
- Safety Monitor Gauge and Alarm
- Motor Starters and Electrical Disconnects with Transformer for Cleaning Circuit Control and Lighting
- Auxiliary Air and Power Outlets
- High Temperature Cut-Off of Blower
- Sprinkler Heads
- Application-Specific Filter Media
- Casters: +2" to Height
- 24-Hr. Timer for Auto Clean

Filter 1 has a policy of continuous design improvement and reserves the right to update designs and specifications without notice.

Typical Applications

Contaminants: Light to Heavy Dust, Soldering Smoke, Powders, Dry Chemicals

Processes

- Sanding / Grinding
- Soldering
- Chemical Mixing
- Finishing
- Deburring
- Buffing

Downtron DFF Series

MODEL	CFM	Blower HP	D x W* H = 36" STD	Filter SQ FT
DFF-3-1-1.5	1,200	1.5	38" x 32"	250
DFF-3-3-3	4,000	3	40" x 36"	750
DFF-56-4-3	4,000	3	48" x 56"	1,000
DFF-6-6-5-40	6,000	5	40" x 72"	1,250
DFF-6-6-5	6,000	5	48" x 72"	1,500
DFF-8-8-5	6,000	5	48" x 96"	2,000
DFF-8-8-7.5	8,000	7.5	48" x 96"	2,000
DFF-8-8-5-5W	6,000	5	60" x 96"	2,000
DFF-10-8-5	6,000	5	48" x 120"	2,000
DFF-10-8-7.5	8,000	7.5	48" x 120"	2,000
DFF-10-10-7.5	8,000	7.5	48" x 120"	2,500
DFF-12-14-7.5	8,000	7.5	72" x 144"	3,500

*Larger/Custom Sizing Available: Consult Factory

FILTER 1

2525 National Dr.
Garland, TX 75041
972-278-2664
info@filter-1.com

WWW.FILTER-1.COM